

## Michael Link

---

**From:** Scott Raborn <raborn@lgl.com>  
**Sent:** Sunday, June 20, 2021 10:43 PM  
**Cc:** Michael Link  
**Subject:** PMTF Catch Update #10, June 20, 2021  
**Attachments:** PMTF Catch Update #10 June 20 2021.pdf; PortMollerTF\_RawData - June 20 2021.pdf

Attached is tonight's catch update along with a figure comparing this year to historical runs and Daily Catch Indices (2011-2020). In recent years, information from the PMTF at this point in the season suggested the runs were not early. This year, strong catches at Port Moller preclude this suspicion. The recent stock composition estimate taken together with these strong catches suggest the Nushagak District should start to see many more fish sometime between June 22 and June 26 (assuming a 7-day travel time between the PMTF and the District).

PMTF Stock Composition Status: Genetic samples from June 17-18 are still expected to be released tomorrow night (June 21).

Summary of today's catch indices as follows:

### Index by Station

S2: 0  
S4: 0  
S6: 104  
S8: 252  
S10: 201  
S12: 86  
S14: 21  
S16: 8  
S18: 34  
S20: 0  
S22: 4

Scott and Michael

**Port Moller Test Fishery: Catch Update #10, 20 June 2021.**

All updates sent by email are also posted online at [www.bbsri.org](http://www.bbsri.org)

Date	Daily Catch Index by Station (Est. catch from the 200 fathom net if it had fished for 1 hr)												Mean Daily Catch Index		Raw catches		Mean Length (mm)		
	S2	S4	S6	S8	S10	S12	S14	S16	S18	S20	S22	S24	Best for comparison w/ prev years	Best for assessing entry pattern this year	4½" mesh	5½" mesh	4½" mesh	5½" mesh	
													(Stns 2-10)	(Stns 2-22)					
10-Jun	1	3	7	11	8	4	2	1	1	1	1	-	6	4					
11-Jun	0	4	4	17	12	6	2	1	1	1	1	-	7	4	9	3	509	475	
12-Jun	0	6	0	28	18	8	4	2	2	1	1	-	10	6	13	8	480	499	
13-Jun	9	2	58	55	21	0	10	3	7	4	-	-	29	17	68	22	482	498	
14-Jun	2	4	4	2	148	2	0	0	6	0	5	-	32	16	69	27	478	525	
15-Jun	2	7	21	94	52	4	0	0	0	0	0	-	35	16	21	53	479	495	
16-Jun	0	0	0	0	117	62	25	14	9	7	5	-	23	22	34	65	474	514	
17-Jun	2	10	0	64	154	0	77	32	24	15	6	-	46	35	127	103	491	503	
18-Jun	19	0	21	58	50	63	41	21	37	36	10	-	30	32	83	94	493	515	
19-Jun	7	5	41	5	389	173	50	33	26	2	2	4	90	67	296	153	489	498	
20-Jun	0	0	104	252	201	86	21	8	34	0	4	-	111	65	216	149	479	498	
21-Jun																			
22-Jun																			
23-Jun																			
24-Jun																			
25-Jun																			
26-Jun																			
27-Jun																			
28-Jun																			
29-Jun																			
30-Jun																			
1-Jul																			
2-Jul																			
3-Jul																			
4-Jul																			
Mean Stn Index	4	4	24	53	106	37	21	10	13	6	4	4			Total =	936 (58%)	677 (42%)	485	503

Red index values were estimated with a statistical model built upon the observed pattern across catch indices to date; thus, these values are subject to change as the season progresses.

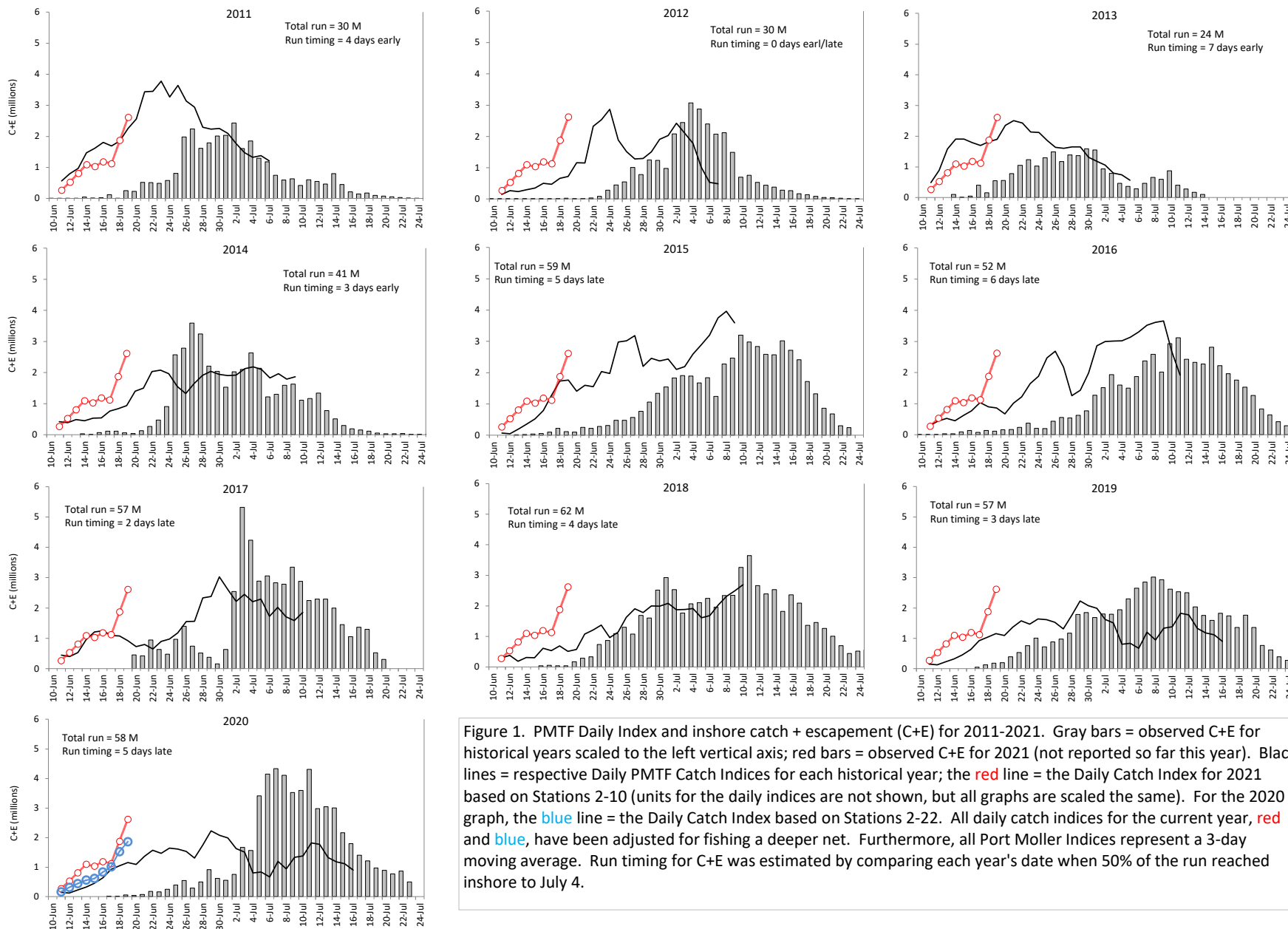


Figure 1. PMTF Daily Index and inshore catch + escapement (C+E) for 2011-2021. Gray bars = observed C+E for historical years scaled to the left vertical axis; red bars = observed C+E for 2021 (not reported so far this year). Black lines = respective Daily PMTF Catch Indices for each historical year; the red line = the Daily Catch Index for 2021 based on Stations 2-10 (units for the daily indices are not shown, but all graphs are scaled the same). For the 2020 graph, the blue line = the Daily Catch Index based on Stations 2-22. All daily catch indices for the current year, red and blue, have been adjusted for fishing a deeper net. Furthermore, all Port Moller Indices represent a 3-day moving average. Run timing for C+E was estimated by comparing each year's date when 50% of the run reached inshore to July 4.