

Michael Link

From: Scott Raborn <raborn@lgl.com>
Sent: Tuesday, July 13, 2021 5:37 PM
To: Michael Link
Cc: Scott Raborn
Subject: PMTF Catch Update #33, July 13, 2021
Attachments: PMTF Catch Update #33 July 13 2021.pdf; PortMollerTF_RawData - July 13 2021.pdf

Tonight's update. The *Ocean Cat* will fish inward tomorrow trying to cover Stations 2-12.

Index by Station

S6: 25
S8: 81
S9: 21
S10: 16
S12: 19
S14: 8

Michael and Scott

Port Moller Test Fishery: Catch Update #33, 13 July 2021.All updates sent by email are also posted online at www.bbsri.org

| Date | Daily Catch Index by Station (Est. catch from the 200 fathom net if it had fished for 1 hr) | | | | | | | | | | | | Mean Daily Catch Index | | Raw catches | | Mean Length (mm) | |
|----------------|--|----|-----|-----|-----|-----|-----|-----|-----|-----|-----|--|---|----------|-------------|------------|------------------|-----|
| | S2 | S4 | S6 | S8 | S10 | S12 | S14 | S16 | S18 | S20 | S22 | Best for comparison w/ prev years (Stns 2-10) | Best for assessing entry pattern this year (Stns 2-22) | 4½" mesh | 5%" mesh | 4½" mesh | 5%" mesh | |
| | | | | | | | | | | | | | | | | | | |
| 10-Jun | 2 | 3 | 6 | 9 | 9 | 6 | 4 | 2 | 2 | 1 | 1 | 6 | 4 | | | | | |
| 11-Jun | 0 | 4 | 4 | 17 | 12 | 8 | 4 | 3 | 2 | 1 | 1 | 7 | 5 | 9 | 3 | 509 | 475 | |
| 12-Jun | 0 | 6 | 0 | 28 | 18 | 8 | 6 | 3 | 2 | 2 | 1 | 10 | 7 | 13 | 8 | 480 | 499 | |
| 13-Jun | 9 | 2 | 58 | 55 | 21 | 0 | 10 | 3 | 7 | 4 | 2 | 29 | 16 | 68 | 22 | 482 | 498 | |
| 14-Jun | 3 | 4 | 4 | 2 | 148 | 2 | 0 | 0 | 6 | 0 | 5 | 32 | 16 | 69 | 27 | 478 | 525 | |
| 15-Jun | 3 | 7 | 20 | 94 | 52 | 4 | 0 | 0 | 0 | 0 | 0 | 35 | 16 | 21 | 53 | 479 | 495 | |
| 16-Jun | 0 | 0 | 0 | 0 | 117 | 62 | 20 | 12 | 10 | 7 | 4 | 23 | 21 | 34 | 65 | 474 | 514 | |
| 17-Jun | 2 | 10 | 0 | 64 | 154 | 0 | 77 | 32 | 24 | 15 | 5 | 46 | 35 | 127 | 103 | 491 | 503 | |
| 18-Jun | 19 | 0 | 21 | 58 | 50 | 63 | 41 | 21 | 37 | 36 | 10 | 30 | 32 | 83 | 94 | 493 | 515 | |
| 19-Jun | 7 | 5 | 41 | 5 | 389 | 173 | 50 | 33 | 26 | 2 | 2 | 90 | 67 | 296 | 153 | 489 | 498 | |
| 20-Jun | 0 | 0 | 104 | 252 | 201 | 86 | 21 | 8 | 34 | 0 | 4 | 111 | 65 | 216 | 149 | 479 | 498 | |
| 21-Jun | 0 | 7 | 52 | 3 | 21 | 2 | 45 | 13 | 93 | 38 | 28 | 16 | 27 | 76 | 79 | 499 | 520 | |
| 22-Jun | 0 | 26 | 89 | 94 | 112 | 76 | 160 | 120 | 69 | 110 | 6 | 64 | 78 | 222 | 169 | 488 | 515 | |
| 23-Jun | 9 | 18 | 37 | 76 | 124 | 139 | 120 | 96 | 71 | 43 | 22 | 53 | 69 | | | | | |
| 24-Jun | 10 | 19 | 37 | 76 | 127 | 150 | 134 | 107 | 78 | 48 | 25 | 54 | 74 | | | | | |
| 25-Jun | 2 | 0 | 18 | 19 | 96 | 146 | 84 | 183 | 114 | 51 | 27 | 27 | 67 | 190 | 154 | 492 | 518 | |
| 26-Jun | 70 | 4 | 27 | 23 | 106 | 168 | 31 | 148 | 242 | 0 | 0 | 46 | 74 | 262 | 108 | 500 | 523 | |
| 27-Jun | 0 | 0 | 2 | 192 | 393 | 148 | 53 | 222 | 45 | 52 | 30 | 117 | 103 | 333 | 378 | 498 | 511 | |
| 28-Jun | 18 | 9 | 37 | 186 | 30 | 19 | 89 | 36 | 144 | 30 | 0 | 56 | 54 | 146 | 133 | 504 | 516 | |
| 29-Jun | 10 | 23 | 51 | 90 | 461 | 335 | 52 | 62 | 53 | 54 | 28 | 127 | 111 | 407 | 208 | 498 | 509 | |
| 30-Jun | 9 | 23 | 52 | 99 | 131 | 120 | 91 | 68 | 53 | 39 | 26 | 63 | 65 | | | | | |
| 1-Jul | 8 | 22 | 52 | 96 | 119 | 100 | 73 | 56 | 45 | 34 | 24 | 59 | 57 | | | | | |
| 2-Jul | 0 | 28 | 4 | 272 | 69 | 37 | 41 | 0 | 0 | 13 | 22 | 75 | 44 | 97 | 105 | 492 | 515 | |
| 3-Jul | 22 | 7 | 15 | 129 | 120 | 0 | 0 | 23 | 67 | 34 | 4 | 59 | 38 | 53 | 97 | 503 | 523 | |
| 4-Jul | 0 | 4 | 0 | 130 | 202 | 16 | 10 | 112 | 38 | 55 | 37 | 67 | 55 | 148 | 80 | 503 | 527 | |
| 5-Jul | 5 | 14 | 40 | 82 | 95 | 70 | 7 | 10 | 75 | 0 | 18 | 47 | 38 | 10 | 21 | 524 | 531 | |
| 6-Jul | 4 | 12 | 38 | 81 | 97 | 72 | 47 | 35 | 30 | 23 | 17 | 47 | 42 | | | | | |
| 7-Jul | 4 | 11 | 36 | 163 | 60 | 159 | 34 | 55 | 0 | 21 | 16 | 55 | 51 | 111 | 103 | 501 | 521 | |
| 8-Jul | 3 | 0 | 0 | 284 | 67 | 45 | 39 | 32 | 38 | 24 | 14 | 71 | 50 | 148 | 82 | 500 | 521 | |
| 9-Jul | 4 | 11 | 35 | 83 | 101 | 68 | 39 | 26 | 20 | 16 | 12 | 47 | 38 | | | | | |
| 10-Jul | 4 | 11 | 0 | 25 | 114 | 27 | 14 | 25 | 14 | 4 | 11 | 31 | 23 | 54 | 26 | 508 | 524 | |
| 11-Jul | 4 | 1 | 0 | 404 | 135 | 38 | 16 | 29 | 18 | 10 | 9 | 109 | 60 | 137 | 126 | 497 | 521 | |
| 12-Jul | 4 | 11 | 30 | 142 | 45 | 12 | 39 | 0 | 11 | 10 | 8 | 46 | 28 | 53 | 37 | 490 | 522 | |
| 13-Jul | 4 | 10 | 25 | 81 | 16 | 19 | 8 | 12 | 10 | 8 | 7 | 27 | 18 | 31 | 29 | 494 | 530 | |
| 14-Jul | | | | | | | | | | | | | | | | | | |
| Mean Stn Index | 7 | 9 | 28 | 100 | 118 | 70 | 43 | 47 | 43 | 23 | 13 | | | Total = | 3414 (57%) | 2612 (43%) | 494 | 513 |

Red index values were estimated with a statistical model built upon the observed pattern across catch indices to date; thus, these values are subject to change as the season progresses.

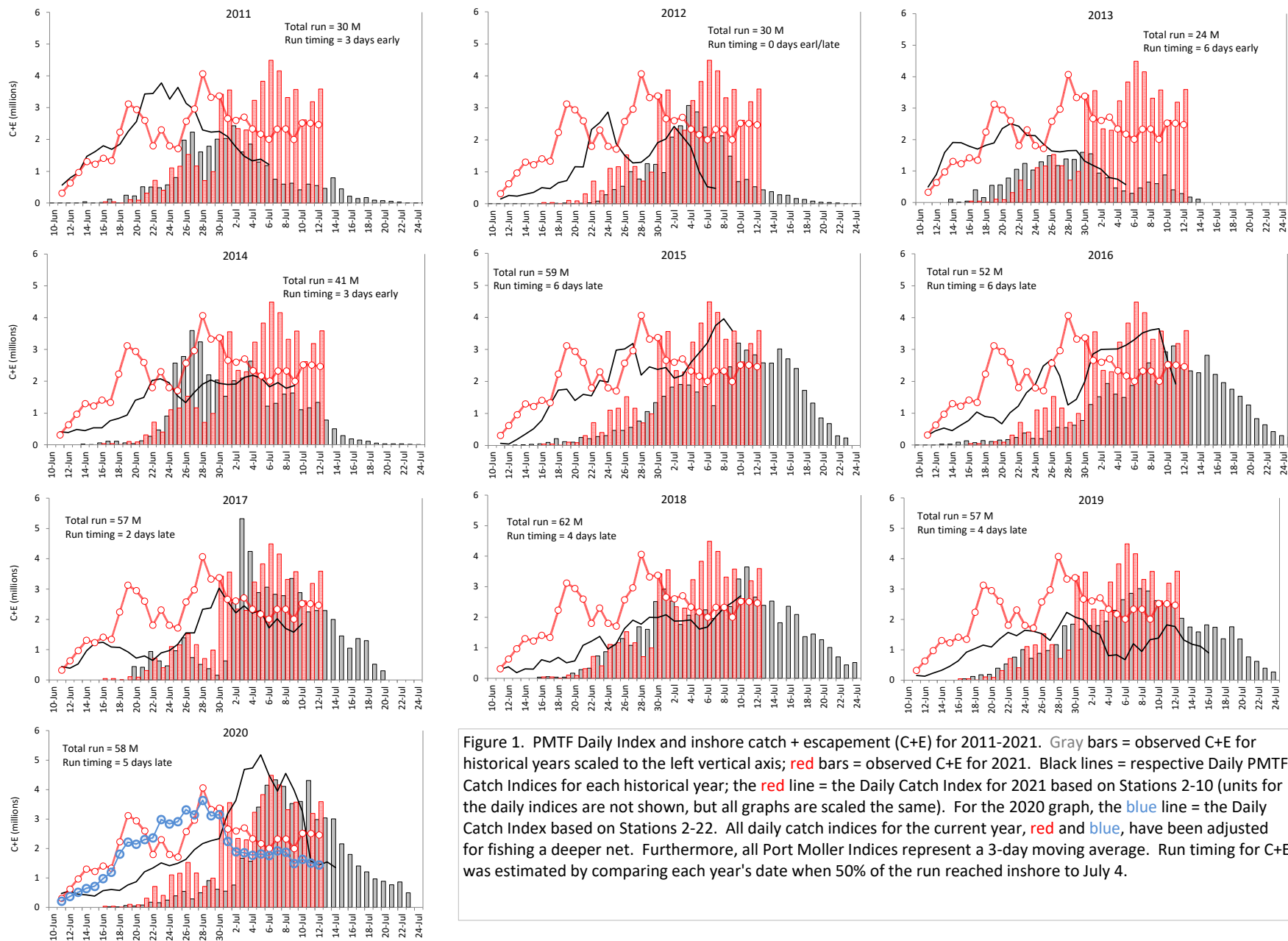


Figure 1. PMTF Daily Index and inshore catch + escapement (C+E) for 2011-2021. Gray bars = observed C+E for historical years scaled to the left vertical axis; red bars = observed C+E for 2021. Black lines = respective Daily PMTF Catch Indices for each historical year; the red line = the Daily Catch Index for 2021 based on Stations 2-10 (units for the daily indices are not shown, but all graphs are scaled the same). For the 2020 graph, the blue line = the Daily Catch Index based on Stations 2-22. All daily catch indices for the current year, red and blue, have been adjusted for fishing a deeper net. Furthermore, all Port Moller Indices represent a 3-day moving average. Run timing for C+E was estimated by comparing each year's date when 50% of the run reached inshore to July 4.