

## Michael Link

---

**From:** Scott Raborn <raborn@lgl.com>  
**Sent:** Wednesday, July 14, 2021 6:14 PM  
**To:** Michael Link  
**Cc:** Scott Raborn  
**Subject:** PMTF Catch Update #34, July 14, 2021  
**Attachments:** PMTF Catch Update #34 July 14 2021.pdf; PortMollerTF\_RawData - July 14 2021.pdf

Tonight's update.

### Index by Station

S2: 8  
S4: 0  
S6: 30  
S8: 60  
S10: 78  
S12: 11

Michael and Scott

**Port Moller Test Fishery: Catch Update #34, 14 July 2021.**All updates sent by email are also posted online at [www.bbsri.org](http://www.bbsri.org)

Date	Daily Catch Index by Station (Est. catch from the 200 fathom net if it had fished for 1 hr)												Mean Daily Catch Index		Raw catches		Mean Length (mm)	
	S2	S4	S6	S8	S10	S12	S14	S16	S18	S20	S22	Best for comparison w/ prev years (Stns 2-10)	Best for assessing entry pattern this year (Stns 2-22)	4½" mesh	5½" mesh	4½" mesh	5½" mesh	
10-Jun	2	3	6	9	9	6	3	2	1	1	1	6	4					
11-Jun	0	4	4	17	12	8	4	3	2	1	1	7	5	9	3	509	475	
12-Jun	0	6	0	28	18	8	6	3	2	2	1	10	7	13	8	480	499	
13-Jun	9	2	58	55	21	0	10	3	7	4	2	29	16	68	22	482	498	
14-Jun	3	4	4	2	148	2	0	0	6	0	5	32	16	69	27	478	525	
15-Jun	3	7	20	94	52	4	0	0	0	0	0	35	16	21	53	479	495	
16-Jun	0	0	0	0	117	62	20	12	10	7	4	23	21	34	65	474	514	
17-Jun	2	10	0	64	154	0	77	32	24	15	6	46	35	127	103	491	503	
18-Jun	19	0	21	58	50	63	41	21	37	36	10	30	32	83	94	493	515	
19-Jun	7	5	41	5	389	173	50	33	26	2	2	90	67	296	153	489	498	
20-Jun	0	0	104	252	201	86	21	8	34	0	4	111	65	216	149	479	498	
21-Jun	0	7	52	3	21	2	45	13	93	38	28	16	27	76	79	499	520	
22-Jun	0	26	89	94	112	76	160	120	69	110	6	64	78	222	169	488	515	
23-Jun	9	18	38	78	127	142	123	98	71	42	21	54	70					
24-Jun	10	19	39	78	129	152	137	109	78	47	24	55	75					
25-Jun	2	0	18	19	96	146	84	183	114	50	27	27	67	190	154	492	518	
26-Jun	70	4	27	23	106	168	31	148	242	0	0	46	74	262	108	500	523	
27-Jun	0	0	2	192	393	148	53	222	45	52	29	117	103	333	378	498	511	
28-Jun	18	9	37	186	30	19	89	36	144	30	0	56	54	146	133	504	516	
29-Jun	10	23	50	90	461	335	52	62	53	54	28	127	111	407	208	498	509	
30-Jun	9	23	51	97	131	121	91	68	52	39	27	62	65					
1-Jul	8	21	51	96	120	104	74	55	45	35	25	59	58					
2-Jul	0	28	4	272	69	37	41	0	0	13	24	75	44	97	105	492	515	
3-Jul	22	7	15	129	120	0	0	23	67	34	4	59	38	53	97	503	523	
4-Jul	0	4	0	130	202	16	10	112	38	55	37	67	55	148	80	503	527	
5-Jul	5	14	40	80	96	74	7	10	75	0	19	47	38	10	21	524	531	
6-Jul	5	13	37	78	95	74	49	35	28	23	17	46	41					
7-Jul	4	12	36	163	60	159	34	55	0	21	16	55	51	111	103	501	521	
8-Jul	3	0	0	284	67	45	39	32	38	24	14	71	50	148	82	500	521	
9-Jul	4	12	36	80	95	67	40	26	20	15	12	45	37					
10-Jul	4	12	0	25	114	27	14	25	14	4	10	31	23	54	26	508	524	
11-Jul	4	1	0	404	135	38	16	29	18	10	9	109	60	137	126	497	521	
12-Jul	4	12	35	142	45	12	39	0	11	9	8	48	29	53	37	490	522	
13-Jul	4	11	25	81	16	19	8	12	10	8	7	27	18	31	29	494	530	
14-Jul	8	0	30	60	78	11	16	11	9	7	6	35	21	44	24	506	517	
15-Jul																		
Mean Stn Index	7	9	28	99	117	69	42	46	42	23	12			Total =	3458 (57%)	2636 (43%)	494	514

Red index values were estimated with a statistical model built upon the observed pattern across catch indices to date; thus, these values are subject to change as the season progresses.

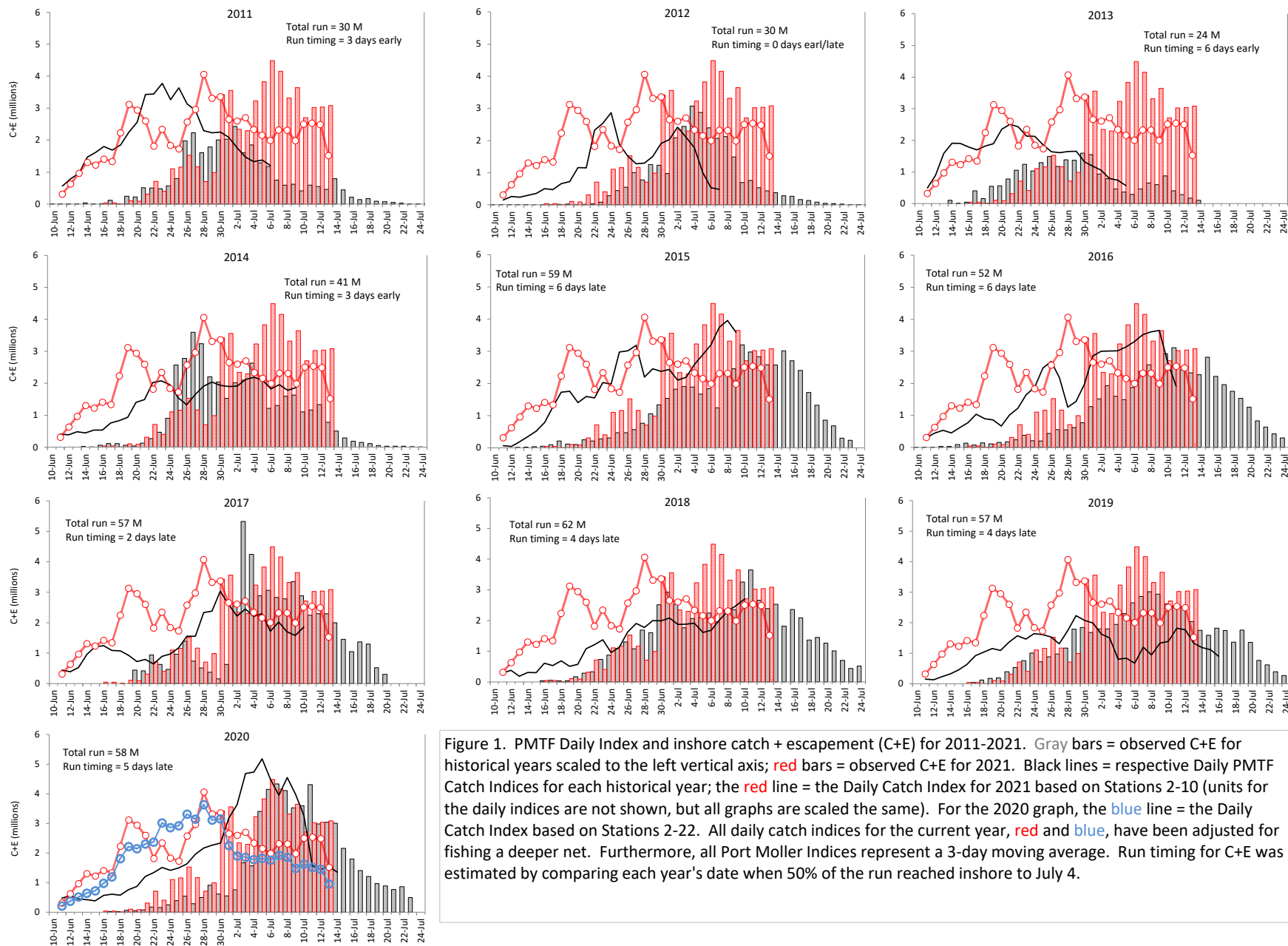


Figure 1. PMTF Daily Index and inshore catch + escapement (C+E) for 2011-2021. Gray bars = observed C+E for historical years scaled to the left vertical axis; red bars = observed C+E for 2021. Black lines = respective Daily PMTF Catch Indices for each historical year; the red line = the Daily Catch Index for 2021 based on Stations 2-10 (units for the daily indices are not shown, but all graphs are scaled the same). For the 2020 graph, the blue line = the Daily Catch Index based on Stations 2-22. All daily catch indices for the current year, red and blue, have been adjusted for fishing a deeper net. Furthermore, all Port Moller Indices represent a 3-day moving average. Run timing for C+E was estimated by comparing each year's date when 50% of the run reached inshore to July 4.