

Scott Raborn

From: Scott Raborn
Sent: Sunday, June 25, 2023 9:01 PM
To: Jordan Head
Cc: Michael Link
Subject: PMTF Catch Update #16, June 25, 2023
Attachments: PMTF Catch Update #16 June 25 2023.pdf; PMTF_RawData - June 25 2023.pdf; PMTF_WeightLengthRelationships_25June2023.pdf

Attached is tonight's update. Also included is the updated weight-length relationship based on PMTF data. The average sized fish caught at the PMTF (pooling all fish from both meshes) remains ~5.6 lbs.

PMTF Stock Composition Status: The 6th stock composition (June 25-26) should be released June 27.

Index by Station

S2: 23
S4: 111
S6: 151
S8: 128
S10: 53
S12: 45
S14: 0
S16: 23
S18: 7
S20: 2
S22: 0

Mean Daily Index = 49

Scott and Jordan

Port Moller Test Fishery: Catch Update #16, 25 July 2023.

All updates sent by email are also posted online at www.bbsri.org

Date	Daily Catch Index by Station (Est. catch from the 200 fathom net if it had fished for 1 hr)												Mean Daily Catch Index Avg. Indices Across Stations (Stns 2-22)	Raw catches		Mean Length (mm)	
	S2	S4	S6	S8	S10	S12	S14	S16	S18	S20	S22	S24		4½" mesh	5½" mesh	4½" mesh	5½" mesh
10-Jun	1	2	3	5	6	5	3	2	1	1	0	0	3	0	0		
11-Jun	1	2	5	8	9	7	4	2	0	0	0	0	3	0	0		
12-Jun	0	4	7	12	6	8	4	2	9	0	0	0	5	9	9	513	538
13-Jun	2	2	8	5	16	30	0	0	0	0	0	0	6	9	25	529	544
14-Jun	4	0	18	17	124	0	5	0	2	0	0	0	15	53	39	531	540
15-Jun	0	41	84	2	0	0	2	0	0	0	0	0	12	18	54	523	546
16-Jun	0	99	20	51	39	16	5	0	0	0	1	0	21	41	30	516	550
17-Jun	9	115	0	2	6	0	2	0	4	1	1	1	13	8	71	519	548
18-Jun	0	45	0	82	156	0	0	0	13	0	1	1	27	138	39	540	546
19-Jun	0	265	282	227	158	139	0	0	0	1	1	1	97	298	364	527	551
20-Jun	0	62	62	75	22	0	5	2	0	2	1	1	21	32	74	530	546
21-Jun	0	62	290	60	23	0	0	0	7	2	2	1	40	101	167	530	549
22-Jun	0	47	10	88	16	2	0	0	0	2	2	2	15	30	50	523	554
23-Jun	0	162	69	103	108	162	0	5	2	0	8	2	56	151	141	536	541
24-Jun	2	223	100	216	25	132	6	0	8	0	8	2	65	125	257	539	546
25-Jun	23	111	151	128	53	45	0	23	7	2	0	4	49	156	132	537	552
26-Jun	-	-	-	-	-	-	-	-	-	-	-	-	-	-	-	-	-
27-Jun	-	-	-	-	-	-	-	-	-	-	-	-	-	-	-	-	-
28-Jun	-	-	-	-	-	-	-	-	-	-	-	-	-	-	-	-	-
29-Jun	-	-	-	-	-	-	-	-	-	-	-	-	-	-	-	-	-
30-Jun	-	-	-	-	-	-	-	-	-	-	-	-	-	-	-	-	-
1-Jul	-	-	-	-	-	-	-	-	-	-	-	-	-	-	-	-	-
2-Jul	-	-	-	-	-	-	-	-	-	-	-	-	-	-	-	-	-
3-Jul	-	-	-	-	-	-	-	-	-	-	-	-	-	-	-	-	-
4-Jul	-	-	-	-	-	-	-	-	-	-	-	-	-	-	-	-	-
5-Jul	-	-	-	-	-	-	-	-	-	-	-	-	-	-	-	-	-
6-Jul	-	-	-	-	-	-	-	-	-	-	-	-	-	-	-	-	-
7-Jul	-	-	-	-	-	-	-	-	-	-	-	-	-	-	-	-	-
8-Jul	-	-	-	-	-	-	-	-	-	-	-	-	-	-	-	-	-
9-Jul	-	-	-	-	-	-	-	-	-	-	-	-	-	-	-	-	-
10-Jul	-	-	-	-	-	-	-	-	-	-	-	-	-	-	-	-	-
11-Jul	-	-	-	-	-	-	-	-	-	-	-	-	-	-	-	-	-
12-Jul	-	-	-	-	-	-	-	-	-	-	-	-	-	-	-	-	-
13-Jul	-	-	-	-	-	-	-	-	-	-	-	-	-	-	-	-	-
14-Jul	-	-	-	-	-	-	-	-	-	-	-	-	-	-	-	-	-
Mean Stn Index	3	78	69	67	48	34	2	2	3	1	2	1	Total =	1169 (45%)	1452 (55%)	532	548

Red index values were estimated with a statistical model built upon the observed pattern across catch indices to date; thus, these values are subject to change as the season progresses.

Figure 1. PMTF Daily Index and inshore catch + escapement (C+E) for 2011-2023. Gray area curve = observed C+E for historical years scaled to the left vertical axis; red columns = observed C+E for 2023. Black lines = respective Daily PMTF Catch Indices for each historical year; the red line = a 3-day moving average of the Daily Catch Index for 2023 based on Stations 2-22 (units for the daily indices are not shown, but all graphs are scaled the same). The green line shown for the 2022 panel reflects the 2023 Daily Catch Index without a moving average. Catch indices for years prior to 2018 represent the average catch-per-unit-effort (CPUE) across Stations 2-10. Furthermore, a shallower net (6 m deep) was used during 2011-2019; beginning in 2020 the net depth has been 11 m deep. Run timing for C+E was estimated by comparing each year's date when 50% of the run reached inshore to July 4. Blue vertical lines highlight July 4 for reference. Blue vertical lines highlight July 4 for reference.

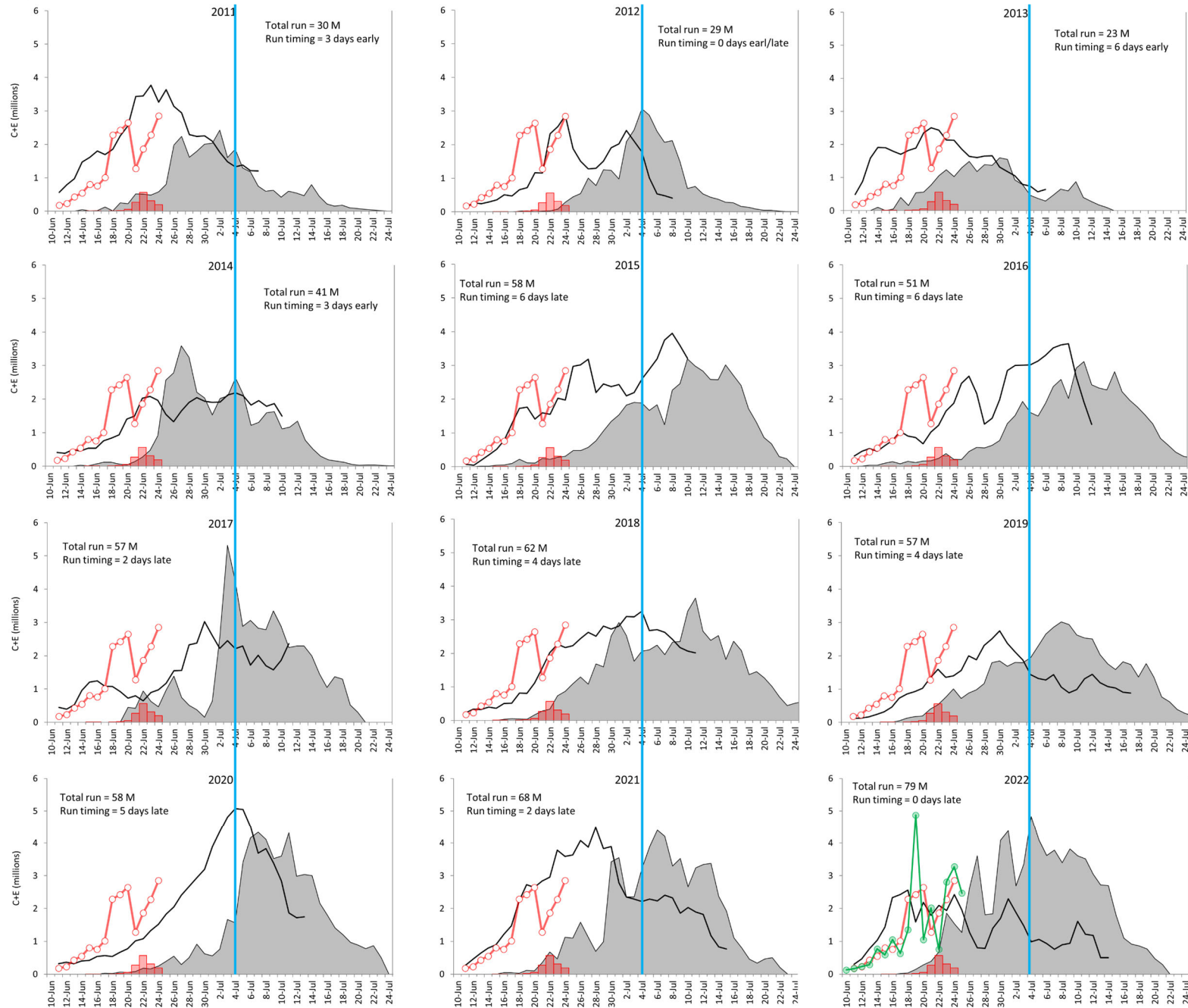


Figure 1. Weight-length relationships based on data from the PMTF through June 25, 2023. The left panel shows these relationships by mesh size; the right panel pools all data. Red arrows indicate the average size of a Sockeye caught at the PMTF thus far (~5.6 lbs).

