

## Michael Link

---

**From:** Scott Raborn <raborn@lgl.com>  
**Sent:** Monday, July 5, 2021 5:37 PM  
**To:** Michael Link  
**Cc:** Scott Raborn  
**Subject:** PMTF Catch Update #25, July 5, 2021  
**Attachments:** PMTF Catch Update #25 July 5 2021.pdf; PortMollerTF\_RawData - July 5 2021.pdf

The *Pandalus* was weathered out today, while the *Ocean Cat* was able to fish Stations 14-20 before heading for cover. Tomorrow's plan is for the *Ocean Cat* to fish inward and attempt Stations 18-8.

While the Daily Indices did not fall yesterday, today's results are uncertain give the sparse coverage of the transect. Inshore catch and escapement should hold steady or increase over the next day or so before declining ~July 8-9. Hopefully, test fishing over the next few days will foretell what happens after that.

PMTF Stock Composition Status: Genetic samples from July 2-3 will be in Port Moller tonight, and we are working to get them to Anchorage tomorrow.

Summary of today's catch indices as follows:

### Index by Station

S12: Not fished  
S14: 7  
S16: 10  
S18: 75  
S20: 0

Scott and Michael

**Port Moller Test Fishery: Catch Update #25, 5 July 2021.**

All updates sent by email are also posted online at [www.bbsri.org](http://www.bbsri.org)

Date	Daily Catch Index by Station (Est. catch from the 200 fathom net if it had fished for 1 hr)												Mean Daily Catch Index		Raw catches		Mean Length (mm)		
													Best for comparison w/ prev years	Best for assessing entry pattern this year	4½" mesh	5½" mesh	4½" mesh	5½" mesh	
	S2	S4	S6	S8	S10	S12	S14	S16	S18	S20	S22	S24	(Stns 2-10)	(Stns 2-22)					
10-Jun	1	3	6	9	8	4	2	1	1	1	1	-	5	3					
11-Jun	0	4	4	17	12	6	3	2	1	1	1	-	7	5	9	3	509	475	
12-Jun	0	6	0	28	17	8	4	2	2	2	1	-	10	6	13	8	480	499	
13-Jun	9	2	58	55	21	0	10	3	7	4	2	-	29	16	68	22	482	498	
14-Jun	2	4	4	2	148	2	0	0	6	0	5	-	32	16	69	27	478	525	
15-Jun	2	7	22	94	52	4	0	0	0	0	0	-	36	17	21	53	479	495	
16-Jun	0	0	0	0	117	62	22	12	8	6	4	-	23	21	34	65	474	514	
17-Jun	2	10	0	64	154	0	77	32	24	15	6	-	46	35	127	103	491	503	
18-Jun	19	0	21	58	50	63	41	21	37	36	10	-	30	32	83	94	493	515	
19-Jun	7	5	41	5	389	173	50	33	26	2	2	4	90	67	296	153	489	498	
20-Jun	0	0	104	252	201	86	21	8	34	0	4	-	111	65	216	149	479	498	
21-Jun	0	7	52	3	21	2	45	13	93	38	28	-	16	27	76	79	499	520	
22-Jun	0	26	89	94	112	76	160	120	69	110	6	-	64	78	222	169	488	515	
23-Jun	7	17	39	75	113	131	124	106	79	45	20	-	50	69					
24-Jun	8	19	40	75	113	133	132	118	89	50	20	-	51	72					
25-Jun	2	0	18	19	96	146	84	183	114	51	20	-	27	67	190	154	492	518	
26-Jun	70	4	27	23	106	168	31	148	242	0	0	-	46	74	262	108	500	523	
27-Jun	0	0	2	192	393	148	53	222	45	52	17	-	117	102	333	378	498	511	
28-Jun	18	9	37	186	30	19	89	36	144	30	0	-	56	54	146	133	504	516	
29-Jun	10	24	56	90	461	335	52	62	53	54	15	-	128	110	407	208	498	509	
30-Jun	9	23	56	114	156	137	97	71	53	33	15	-	72	69					
1-Jul	8	21	53	110	147	122	80	57	45	31	16	-	68	63					
2-Jul	0	28	4	272	69	37	41	0	0	13	18	-	75	44	97	105	492	515	
3-Jul	22	7	15	129	120	0	0	23	67	34	4	-	59	38	53	97	503	523	
4-Jul	0	4	0	130	202	16	10	112	38	55	37	-	67	55	148	80	503	527	
5-Jul	4	8	18	37	48	40	7	10	75	0	26	-	23	25	10	21	524	531	
6-Jul																			
7-Jul																			
8-Jul																			
9-Jul																			
10-Jul																			
Mean Stn Index	8	9	29	82	129	74	48	54	52	26	11	4			Total =	2880 (57%)	2209 (43%)	493	512

Red index values were estimated with a statistical model built upon the observed pattern across catch indices to date; thus, these values are subject to change as the season progresses.

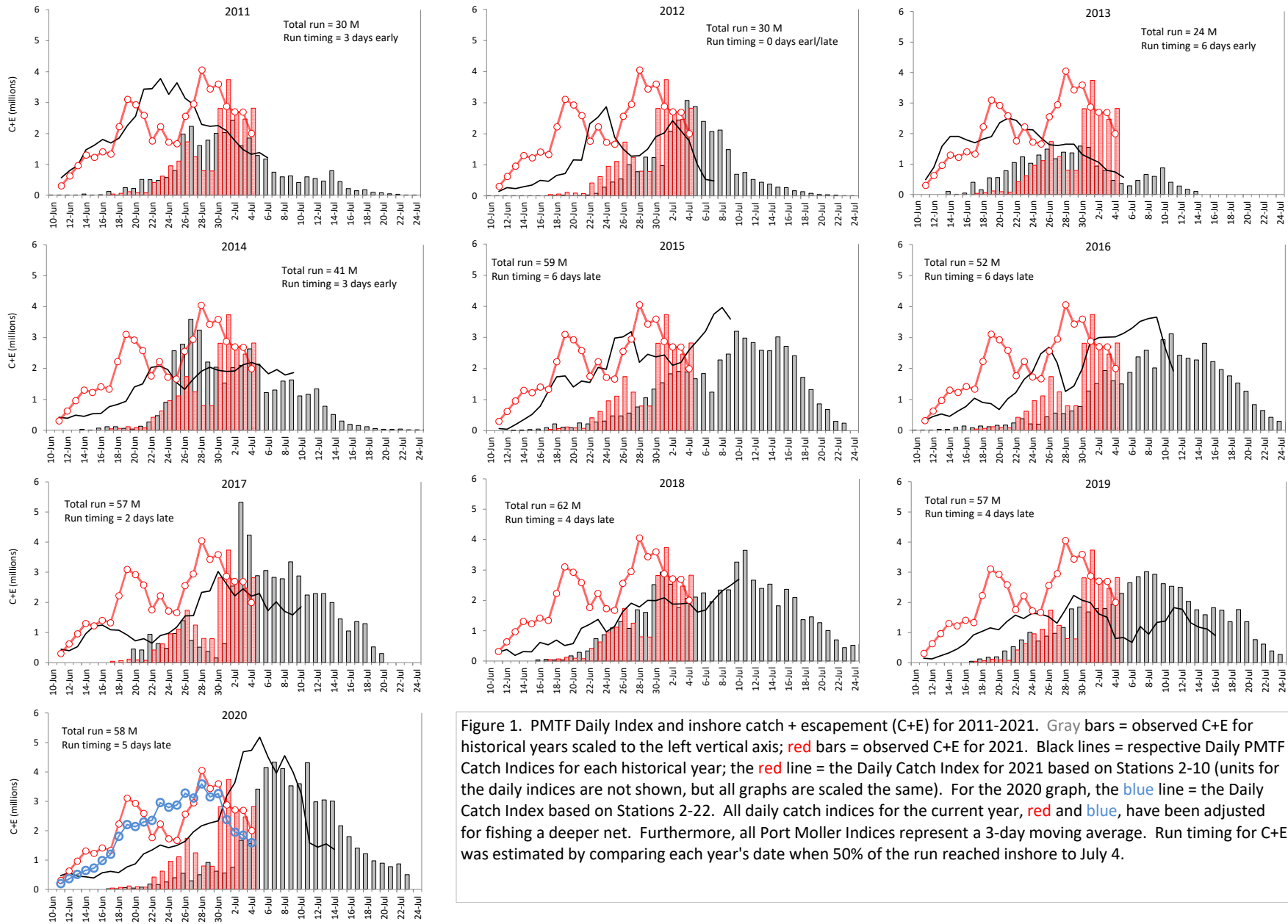


Figure 1. PMTF Daily Index and inshore catch + escapement (C+E) for 2011-2021. Gray bars = observed C+E for historical years scaled to the left vertical axis; red bars = observed C+E for 2021. Black lines = respective Daily PMTF Catch Indices for each historical year; the red line = the Daily Catch Index for 2021 based on Stations 2-10 (units for the daily indices are not shown, but all graphs are scaled the same). For the 2020 graph, the blue line = the Daily Catch Index based on Stations 2-22. All daily catch indices for the current year, red and blue, have been adjusted for fishing a deeper net. Furthermore, all Port Moller Indices represent a 3-day moving average. Run timing for C+E was estimated by comparing each year's date when 50% of the run reached inshore to July 4.