

## Michael Link

---

**From:** Scott Raborn <raborn@lgl.com>  
**Sent:** Saturday, July 3, 2021 6:59 PM  
**To:** Michael Link  
**Cc:** Scott Raborn  
**Subject:** PMTF Catch Update #23, July 23, 2021  
**Attachments:** PMTF Catch Update #23 July 3 2021.pdf; PortMollerTF\_RawData - July 3 2021.pdf; BB\_Age Comp\_5\_7-3.pdf

Tonight's catch update. Also, attached are the latest age composition estimates.

PMTF Stock Composition Status: Genetic samples from July 2-3 will travel to Anchorage on Tuesday (July 6). We will know more in a day or so as to when to expect the next stock composition estimate.

Summary of today's catch indices as follows:

### Index by Station

S2: 22  
S4: 7  
S6: 15  
S8: 129  
S10: 120  
S12: 0  
S14: 0  
S16: 23  
S18: 67  
S20: 34  
S22: 4

Scott and Michael

**Port Moller Test Fishery: Catch Update #23, 3 July 2021.**

All updates sent by email are also posted online at [www.bbsri.org](http://www.bbsri.org)

Date	Daily Catch Index by Station (Est. catch from the 200 fathom net if it had fished for 1 hr)													Mean Daily Catch Index				Raw catches		Mean Length (mm)	
														Best for comparison w/ prev years		Best for assessing entry pattern this year		4½" mesh	5½" mesh	4½" mesh	5½" mesh
	S2	S4	S6	S8	S10	S12	S14	S16	S18	S20	S22	S24	(Stns 2-10)		(Stns 2-22)						
10-Jun	1	3	7	9	8	5	2	1	1	1	1	-	6	4							
11-Jun	0	4	4	17	12	6	3	2	1	1	1	-	7	5			9	3	509	475	
12-Jun	0	6	0	28	18	8	4	2	2	1	1	-	10	6			13	8	480	499	
13-Jun	9	2	58	55	21	0	10	3	7	4	2	-	29	16			68	22	482	498	
14-Jun	2	4	4	2	148	2	0	0	6	0	5	-	32	16			69	27	478	525	
15-Jun	2	7	22	94	52	4	0	0	0	0	0	-	36	17			21	53	479	495	
16-Jun	0	0	0	0	117	62	22	12	9	7	4	-	23	21			34	65	474	514	
17-Jun	2	10	0	64	154	0	77	32	24	15	6	-	46	35			127	103	491	503	
18-Jun	19	0	21	58	50	63	41	21	37	36	10	-	30	32			83	94	493	515	
19-Jun	7	5	41	5	389	173	50	33	26	2	2	4	90	67			296	153	489	498	
20-Jun	0	0	104	252	201	86	21	8	34	0	4	-	111	65			216	149	479	498	
21-Jun	0	7	52	3	21	2	45	13	93	38	28	-	16	27			76	79	499	520	
22-Jun	0	26	89	94	112	76	160	120	69	110	6	-	64	78			222	169	488	515	
23-Jun	7	17	38	75	113	128	120	104	79	46	19	-	50	68							
24-Jun	8	18	39	75	114	132	130	117	90	50	20	-	51	72							
25-Jun	2	0	18	19	96	146	84	183	114	52	20	-	27	67			190	154	492	518	
26-Jun	70	4	27	23	106	168	31	148	242	0	0	-	46	74			262	108	500	523	
27-Jun	0	0	2	192	393	148	53	222	45	52	17	-	117	102			333	378	498	511	
28-Jun	18	9	37	186	30	19	89	36	144	30	0	-	56	54			146	133	504	516	
29-Jun	12	25	57	90	461	335	52	62	53	54	14	-	129	110			407	208	498	509	
30-Jun	12	25	58	113	150	129	90	65	48	29	12	-	71	66							
1-Jul	11	24	55	105	133	105	67	47	36	25	12	-	66	56							
2-Jul	0	28	4	272	69	37	41	0	0	13	11	-	75	43			97	105	428	515	
3-Jul	22	7	15	129	120	0	0	23	67	34	4	-	59	38			53	97	503	523	
4-Jul																					
Mean Stn Index	9	10	31	82	129	76	50	52	51	25	8	4			Total =	2722 (56%)	2108 (44%)	490	511		

Red index values were estimated with a statistical model built upon the observed pattern across catch indices to date; thus, these values are subject to change as the season progresses.

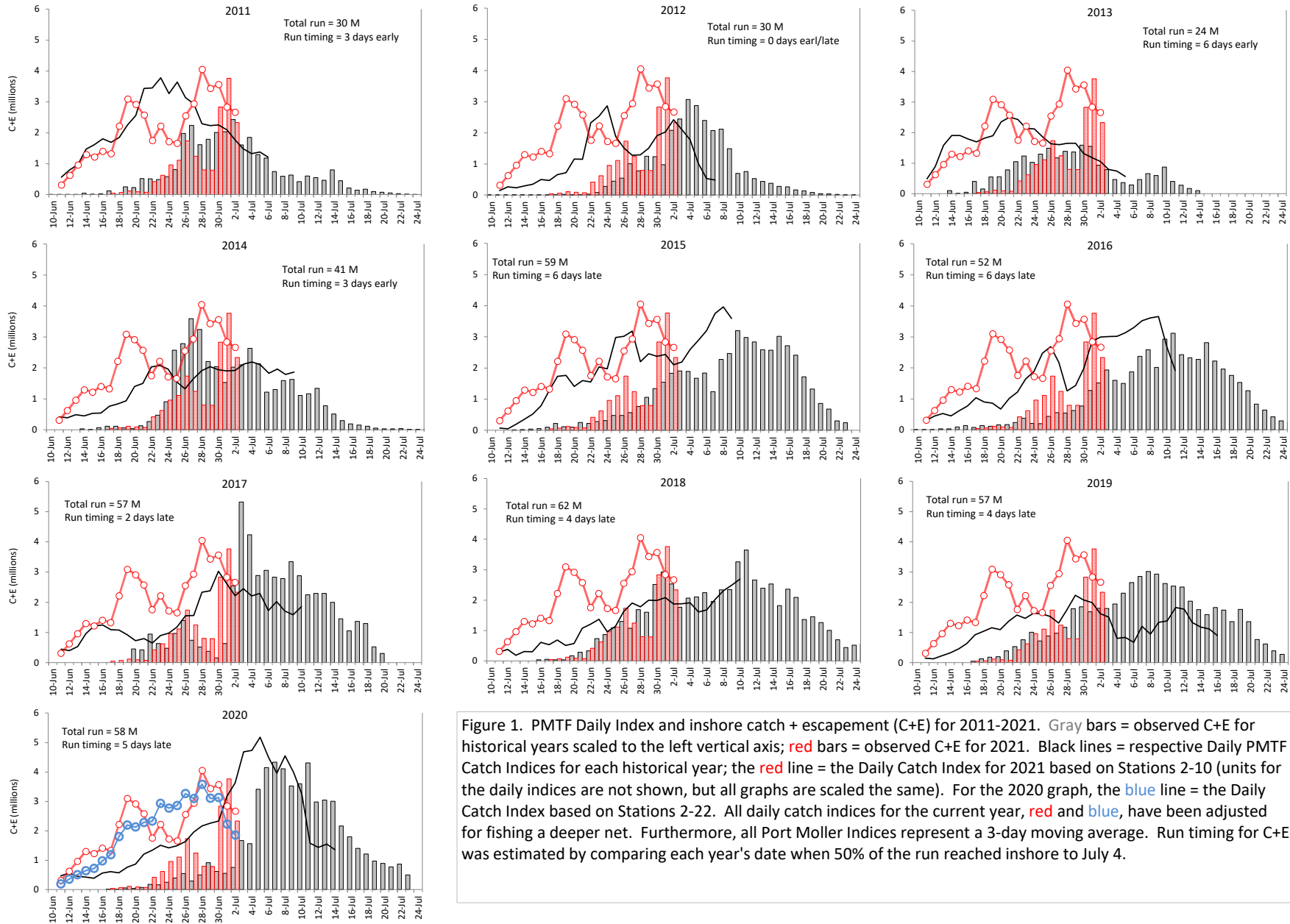


Figure 1. PMTF Daily Index and inshore catch + escapement (C+E) for 2011-2021. Gray bars = observed C+E for historical years scaled to the left vertical axis; red bars = observed C+E for 2021. Black lines = respective Daily PMTF Catch Indices for each historical year; the red line = the Daily Catch Index for 2021 based on Stations 2-10 (units for the daily indices are not shown, but all graphs are scaled the same). For the 2020 graph, the blue line = the Daily Catch Index based on Stations 2-22. All daily catch indices for the current year, red and blue, have been adjusted for fishing a deeper net. Furthermore, all Port Moller Indices represent a 3-day moving average. Run timing for C+E was estimated by comparing each year's date when 50% of the run reached inshore to July 4.