

## Michael Link

---

**From:** Scott Raborn <raborn@lgl.com>  
**Sent:** Thursday, July 8, 2021 9:18 PM  
**To:** Michael Link  
**Cc:** Scott Raborn  
**Subject:** PMTF Catch Update #28, July 8, 2021  
**Attachments:** PMTF Catch Update #28 July 8 2021.pdf; PortMollerTF\_RawData - July 8 2021.pdf

Tonight's catch update.

Similar to yesterday and the days prior to being weathered off (July 2-4), a strong band of fish remains between Stations 8-12 indicating the tail of the run may not decline rapidly.

PMTF Stock Composition Status: We are trying to get genetic samples from yesterday and today into the gene lab via the "Northern Route" through Togiak. No guarantees, but these samples could be in Anchorage by tomorrow evening. So, a stock composition estimate for July 7-8 could be released sometime on Saturday (July 10) if the stars align correctly.

Summary of today's catch indices as follows:

### Index by Station

S2: 3  
S4: 0  
S6: 0  
S8: 284  
S10: 67  
S12: 45  
S14: 39  
S16: 32  
S18: 38  
S20: 24

Scott and Michael

**Port Moller Test Fishery: Catch Update #28, 8 July 2021.**

All updates sent by email are also posted online at [www.bbsri.org](http://www.bbsri.org)

Date	Daily Catch Index by Station (Est. catch from the 200 fathom net if it had fished for 1 hr)												Mean Daily Catch Index		Raw catches		Mean Length (mm)		
	S2	S4	S6	S8	S10	S12	S14	S16	S18	S20	S22	S24	Best for comparison w/ prev years (Stns 2-10)	Best for assessing entry pattern this year (Stns 2-22)	4½" mesh	5½" mesh	4½" mesh	5½" mesh	
													(Stns 2-10)	(Stns 2-22)					
10-Jun	1	3	6	8	8	6	4	2	2	1	1	-	5	4					
11-Jun	0	4	4	17	12	8	5	3	2	2	1	-	7	5	9	3	509	475	
12-Jun	0	6	0	28	17	8	6	4	2	2	2	-	10	7	13	8	480	499	
13-Jun	9	2	58	55	21	0	10	3	7	4	2	-	29	16	68	22	482	498	
14-Jun	3	4	4	2	148	2	0	0	6	0	5	-	32	16	69	27	478	525	
15-Jun	3	8	21	94	52	4	0	0	0	0	0	-	36	17	21	53	479	495	
16-Jun	0	0	0	0	117	62	22	12	9	7	4	-	23	21	34	65	474	514	
17-Jun	2	10	0	64	154	0	77	32	24	15	6	-	46	35	127	103	491	503	
18-Jun	19	0	21	58	50	63	41	21	37	36	10	-	30	32	83	94	493	515	
19-Jun	7	5	41	5	389	173	50	33	26	2	2	4	90	67	296	153	489	498	
20-Jun	0	0	104	252	201	86	21	8	34	0	4	-	111	65	216	149	479	498	
21-Jun	0	7	52	3	21	2	45	13	93	38	28	-	16	27	76	79	499	520	
22-Jun	0	26	89	94	112	76	160	120	69	110	6	-	64	78	222	169	488	515	
23-Jun	9	19	39	80	123	130	112	96	75	44	20	-	54	68					
24-Jun	10	19	39	78	125	138	123	106	80	46	22	-	54	72					
25-Jun	2	0	18	19	96	146	84	183	114	48	24	-	27	67	190	154	492	518	
26-Jun	70	4	27	23	106	168	31	148	242	0	0	-	46	74	262	108	500	523	
27-Jun	0	0	2	192	393	148	53	222	45	52	25	-	117	103	333	378	498	511	
28-Jun	18	9	37	186	30	19	89	36	144	30	0	-	56	54	146	133	504	516	
29-Jun	10	21	46	90	461	335	52	62	53	54	25	-	126	110	407	208	498	509	
30-Jun	10	20	46	96	137	123	90	69	55	39	24	-	62	64					
1-Jul	9	20	46	94	124	103	72	56	47	35	23	-	58	57					
2-Jul	0	28	4	272	69	37	41	0	0	13	22	-	75	44	97	105	492	515	
3-Jul	22	7	15	129	120	0	0	23	67	34	4	-	59	38	53	97	503	523	
4-Jul	0	4	0	130	202	16	10	112	38	55	37	-	67	55	148	80	503	527	
5-Jul	7	16	41	79	94	69	7	10	75	0	20	-	47	38	10	21	524	531	
6-Jul	7	16	39	77	93	71	47	36	31	26	20	-	46	42					
7-Jul	7	16	38	163	60	159	34	55	0	26	20	-	57	53	111	103	501	521	
8-Jul	3	0	0	284	67	45	39	32	38	24	21	-	71	50	148	82	500	521	
9-Jul																			
10-Jul																			
Mean Stn Index	8	9	29	92	124	76	46	52	49	26	13	4			Total =	3139 (57%)	2394 (43%)	494	513

Red index values were estimated with a statistical model built upon the observed pattern across catch indices to date; thus, these values are subject to change as the season progresses.

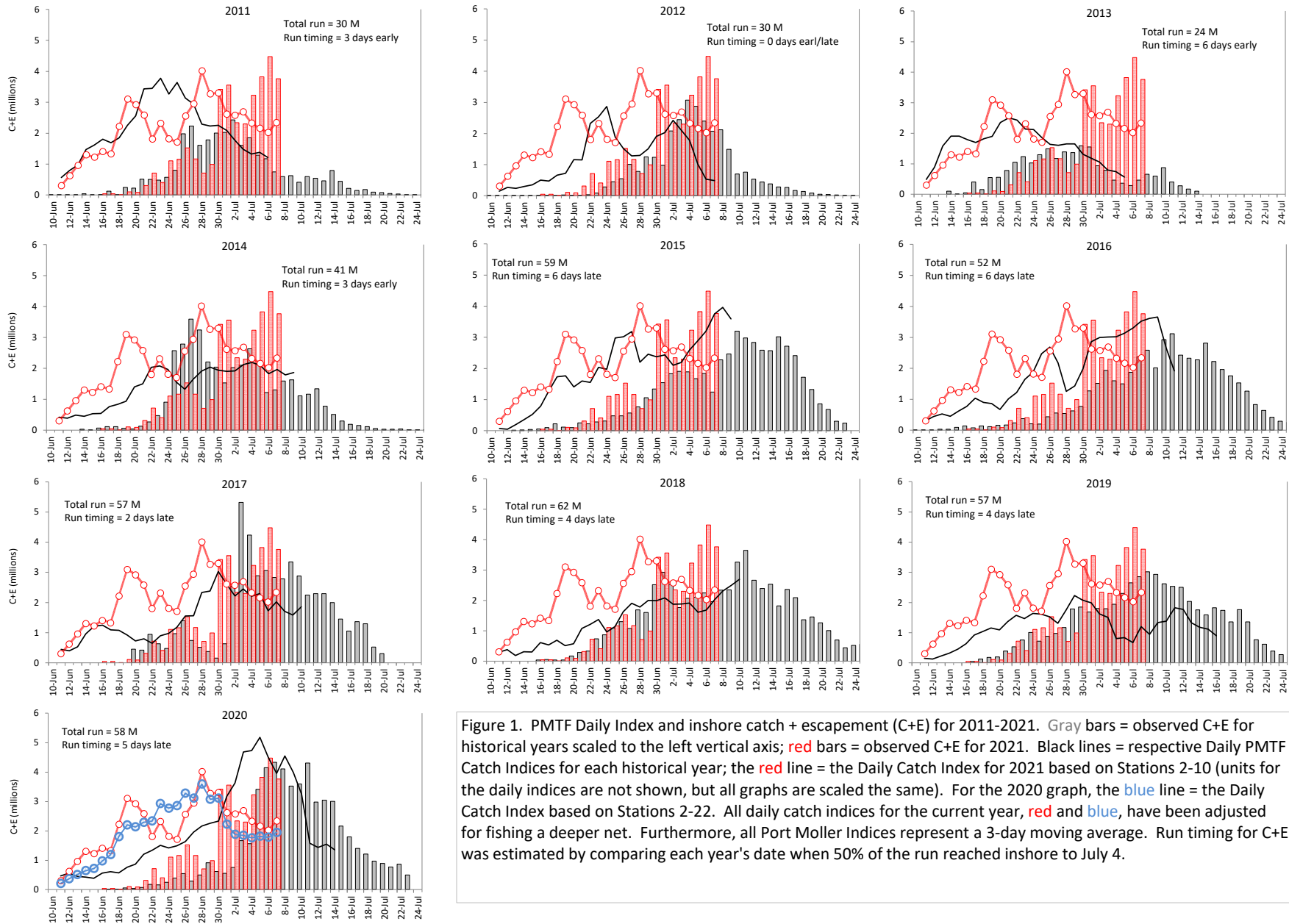


Figure 1. PMTF Daily Index and inshore catch + escapement (C+E) for 2011-2021. Gray bars = observed C+E for historical years scaled to the left vertical axis; red bars = observed C+E for 2021. Black lines = respective Daily PMTF Catch Indices for each historical year; the red line = the Daily Catch Index for 2021 based on Stations 2-10 (units for the daily indices are not shown, but all graphs are scaled the same). For the 2020 graph, the blue line = the Daily Catch Index based on Stations 2-22. All daily catch indices for the current year, red and blue, have been adjusted for fishing a deeper net. Furthermore, all Port Moller Indices represent a 3-day moving average. Run timing for C+E was estimated by comparing each year's date when 50% of the run reached inshore to July 4.