

## Michael Link

---

**From:** Scott Raborn <raborn@lgl.com>  
**Sent:** Monday, July 12, 2021 6:39 PM  
**To:** Michael Link  
**Cc:** Scott Raborn  
**Subject:** PMTF Catch Update #32, July 12, 2021  
**Attachments:** PMTF Catch Update #32 July 12 2021.pdf; PortMollerTF\_RawData - July 12 2021.pdf

Tonight's update.

PMTF Stock Composition Status: Genetic samples from the 7/10-11 are in the gene lab, so the next stock composition estimate should be released tomorrow.

### Index by Station

S6: Not fished  
S7: 4  
S8: 142  
S9: 3  
S10: 45  
S12: 12  
S14: 39  
S16: 0  
S18: Not fished

Michael and Scott

**Port Moller Test Fishery: Catch Update #32, 12 July 2021.**

All updates sent by email are also posted online at [www.bbsri.org](http://www.bbsri.org)

Date	Daily Catch Index by Station (Est. catch from the 200 fathom net if it had fished for 1 hr)												Mean Daily Catch Index		Raw catches		Mean Length (mm)	
													Best for comparison w/ prev years	Best for assessing entry pattern this year	4½" mesh	5%" mesh	4½" mesh	5%" mesh
	S2	S4	S6	S8	S10	S12	S14	S16	S18	S20	S22	(Stns 2-10)	(Stns 2-22)					
10-Jun	2	3	6	9	9	6	3	2	1	1	1	6	4					
11-Jun	0	4	4	17	12	8	4	3	2	1	1	7	5	9	3	509	475	
12-Jun	0	6	0	28	18	8	6	3	2	2	1	10	7	13	8	480	499	
13-Jun	9	2	58	55	21	0	10	3	7	4	2	29	16	68	22	482	498	
14-Jun	3	4	4	2	148	2	0	0	6	0	5	32	16	69	27	478	525	
15-Jun	3	7	20	94	52	4	0	0	0	0	0	35	16	21	53	479	495	
16-Jun	0	0	0	0	117	62	20	13	10	7	4	23	21	34	65	474	514	
17-Jun	2	10	0	64	154	0	77	32	24	15	6	46	35	127	103	491	503	
18-Jun	19	0	21	58	50	63	41	21	37	36	10	30	32	83	94	493	515	
19-Jun	7	5	41	5	389	173	50	33	26	2	2	90	67	296	153	489	498	
20-Jun	0	0	104	252	201	86	21	8	34	0	4	111	65	216	149	479	498	
21-Jun	0	7	52	3	21	2	45	13	93	38	28	16	27	76	79	499	520	
22-Jun	0	26	89	94	112	76	160	120	69	110	6	64	78	222	169	488	515	
23-Jun	9	18	37	77	125	140	121	96	71	43	22	53	69					
24-Jun	10	19	38	76	128	151	135	108	78	48	25	54	74					
25-Jun	2	0	18	19	96	146	84	183	114	51	28	27	67	190	154	492	518	
26-Jun	70	4	27	23	106	168	31	148	242	0	0	46	74	262	108	500	523	
27-Jun	0	0	2	192	393	148	53	222	45	52	30	117	103	333	378	498	511	
28-Jun	18	9	37	186	30	19	89	36	144	30	0	56	54	146	133	504	516	
29-Jun	10	24	51	90	461	335	52	62	53	54	28	127	111	407	208	498	509	
30-Jun	10	23	52	99	131	120	90	67	52	38	26	63	64					
1-Jul	8	22	52	97	119	101	73	55	44	34	24	60	57					
2-Jul	0	28	4	272	69	37	41	0	0	13	22	75	44	97	105	492	515	
3-Jul	22	7	15	129	120	0	0	23	67	34	4	59	38	53	97	503	523	
4-Jul	0	4	0	130	202	16	10	112	38	55	37	67	55	148	80	503	527	
5-Jul	5	14	39	80	94	71	7	10	75	0	18	46	38	10	21	524	531	
6-Jul	4	12	37	79	95	72	47	35	30	23	17	45	41					
7-Jul	4	11	35	163	60	159	34	55	0	21	16	55	51	111	103	501	521	
8-Jul	3	0	0	284	67	45	39	32	38	24	14	71	50	148	82	500	521	
9-Jul	4	11	34	81	101	70	40	26	20	16	13	46	38					
10-Jul	4	11	0	25	114	27	14	25	14	4	11	31	23	54	26	508	524	
11-Jul	4	1	0	404	135	38	16	29	18	10	10	109	61	137	126	497	521	
12-Jul	4	11	30	142	45	12	39	0	12	10	9	46	29	53	37	490	522	
13-Jul																		
14-Jul																		
Mean Stn Index	7	9	28	101	121	72	44	48	44	24	13			Total =	3383 (57%)	2583 (43%)	494	513

Red index values were estimated with a statistical model built upon the observed pattern across catch indices to date; thus, these values are subject to change as the season progresses.

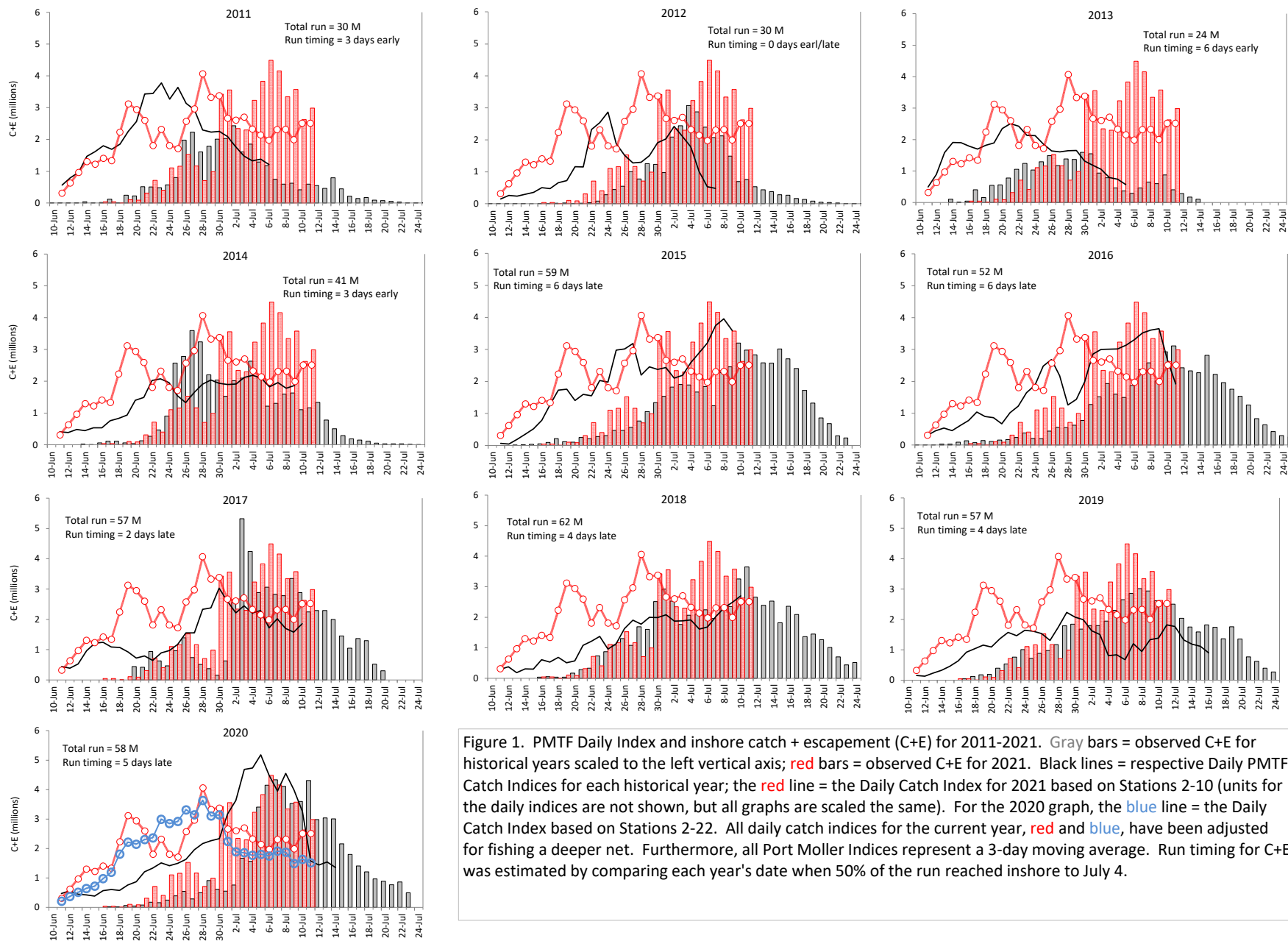


Figure 1. PMTF Daily Index and inshore catch + escapement (C+E) for 2011-2021. Gray bars = observed C+E for historical years scaled to the left vertical axis; red bars = observed C+E for 2021. Black lines = respective Daily PMTF Catch Indices for each historical year; the red line = the Daily Catch Index for 2021 based on Stations 2-10 (units for the daily indices are not shown, but all graphs are scaled the same). For the 2020 graph, the blue line = the Daily Catch Index based on Stations 2-22. All daily catch indices for the current year, red and blue, have been adjusted for fishing a deeper net. Furthermore, all Port Moller Indices represent a 3-day moving average. Run timing for C+E was estimated by comparing each year's date when 50% of the run reached inshore to July 4.