

Michael Link

From: Scott Raborn <raborn@lgl.com>
Sent: Monday, June 28, 2021 11:01 AM
Cc: Michael Link
Subject: PMTF Catch Update #17, June 27, 2021—REVISED
Attachments: PMTF Catch Update #17 June 27 2021.pdf; PortMollerTF_RawData - June 27 2021.pdf

Hi Everyone,

Last night, it took the *Pandalus* crew a while to finish the set at Station 10, and for good reason as it was the largest catch index of the season. The Station 2-22 Daily Index showed the passage rate at Port Moller still building prior too updating this data point. Nevertheless, this sample helps to confirm that a large band of fish continues to move through the center of the transect and changes how one might interpret the trend in the Station 2-10 Index.

Summary of yesterday's catch indices as follows:

Index by Station

S2: 0
S4: 0
S6: 2
S8: 192
S10: **393**
S12: 148
S14: 53
S16: 222
S18: 45
S20: 52

Scott and Michael

Port Moller Test Fishery: Catch Update #17, 27 June 2021.

All updates sent by email are also posted online at www.bbsri.org

Date	Daily Catch Index by Station (Est. catch from the 200 fathom net if it had fished for 1 hr)													Mean Daily Catch Index		Raw catches		Mean Length (mm)	
														Best for comparison w/ prev years	Best for assessing entry pattern this year	4½" mesh	5½" mesh	4½" mesh	5½" mesh
	S2	S4	S6	S8	S10	S12	S14	S16	S18	S20	S22	S24	(Stns 2-10)	(Stns 2-22)					
10-Jun	1	3	7	9	8	5	2	1	1	1	1	-	6	4					
11-Jun	0	4	4	17	12	7	3	2	1	1	1	-	7	5	9	3	509	475	
12-Jun	0	6	0	28	17	8	5	3	2	1	1	-	10	6	13	8	480	499	
13-Jun	9	2	58	55	21	0	10	3	7	4	2	-	29	16	68	22	482	498	
14-Jun	2	4	4	2	148	2	0	0	6	0	5	-	32	16	69	27	478	525	
15-Jun	2	8	23	94	52	4	0	0	0	0	0	-	36	17	21	53	479	495	
16-Jun	0	0	0	0	117	62	22	13	9	6	4	-	23	21	34	65	474	514	
17-Jun	2	10	0	64	154	0	77	32	24	15	6	-	46	35	127	103	491	503	
18-Jun	19	0	21	58	50	63	41	21	37	36	10	-	30	32	83	94	493	515	
19-Jun	7	5	41	5	389	173	50	33	26	2	2	4	90	67	296	153	489	498	
20-Jun	0	0	104	252	201	86	21	8	34	0	4	-	111	65	216	149	479	498	
21-Jun	0	7	52	3	21	2	45	13	93	38	28	-	16	27	76	79	499	520	
22-Jun	0	26	89	94	112	76	160	120	69	110	6	-	64	78	222	169	488	515	
23-Jun	8	18	39	74	109	127	126	109	78	43	19	-	49	68					
24-Jun	9	19	38	68	102	127	136	123	88	46	19	-	47	70					
25-Jun	2	0	18	19	96	146	84	183	114	47	18	-	27	66	190	154	492	518	
26-Jun	70	4	27	23	106	168	31	148	242	0	0	-	46	74	262	108	500	523	
27-Jun	0	0	2	192	393	148	53	222	45	52	15	-	117	102	333	378	498	511	
28-Jun																			
29-Jun																			
30-Jun																			
1-Jul																			
2-Jul																			
3-Jul																			
4-Jul																			
Mean Stn Index	7	6	29	59	117	67	48	57	49	22	8	4			Total =	2019 (56%)	1565 (44%)	491	510

Red index values were estimated with a statistical model built upon the observed pattern across catch indices to date; thus, these values are subject to change as the season progresses.

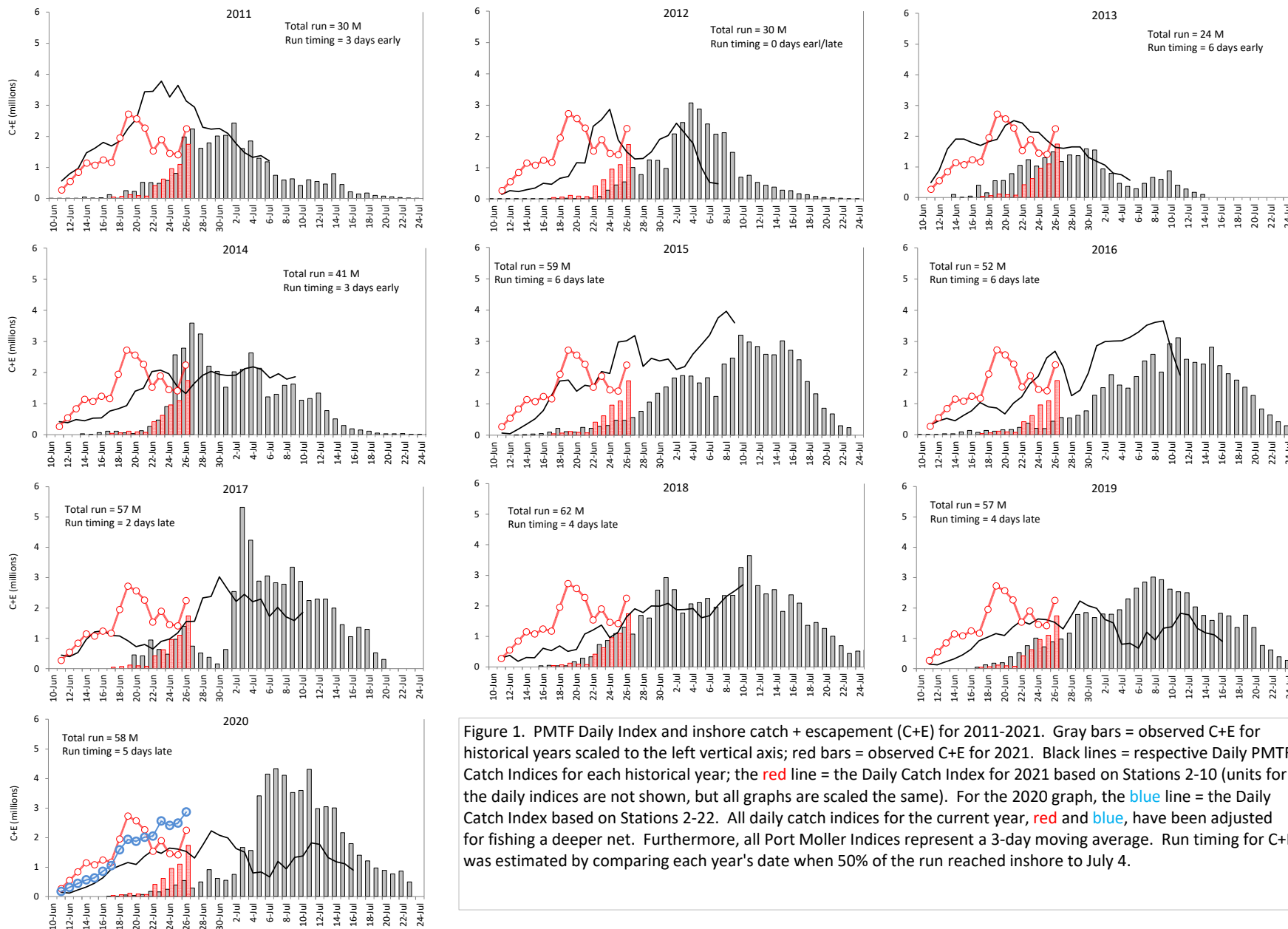


Figure 1. PMTF Daily Index and inshore catch + escapement (C+E) for 2011-2021. Gray bars = observed C+E for historical years scaled to the left vertical axis; red bars = observed C+E for 2021. Black lines = respective Daily PMTF Catch Indices for each historical year; the red line = the Daily Catch Index for 2021 based on Stations 2-10 (units for the daily indices are not shown, but all graphs are scaled the same). For the 2020 graph, the blue line = the Daily Catch Index based on Stations 2-22. All daily catch indices for the current year, red and blue, have been adjusted for fishing a deeper net. Furthermore, all Port Moller Indices represent a 3-day moving average. Run timing for C+E was estimated by comparing each year's date when 50% of the run reached inshore to July 4.